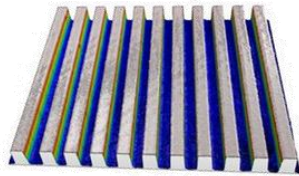
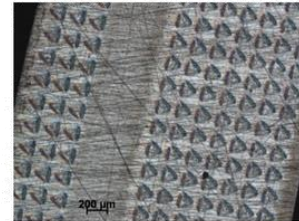


Our skills

Plasma structuring, metal surfaces functionalization



Sillons 100 μm x 10 μm



Triangles 150 μm côté, 300 nm profondeur

YOUR NEEDS

- Innovate with a new material
- Determine the best process to manufacture your material
- Optimize your manufacturing parameters
- Upscale / assembly of TRLs, manufacture of prototypes
- Maintain or developing your skills
- Characterize and evaluate your coatings

OUR SOLUTIONS

- Improve the mechanical properties (hardness, wear resistance, friction) of your metal parts
- Develop new or optimized functionalities for tribology, optics, marking, biomedical, watchmaking, etc.
- Create negative or positive patterns of simple or complex geometry in the 0.1 - 1000 μm range
 - Characterize your modified surfaces
 - Carry out friction or wettability tests
 - Optimize your manufacturing parameters

KEYWORDS

Surface structuring, functionalization, plasma etching, thermochemical treatments, tribology, optics, wettability

RELATED SKILLS

- Electrolytic Plasmas
- Development and control of plasma processes
- Discharges of physics and chemistry
- Optical emission spectroscopy
- Magnetic measurements
- Structural and microstructural characterization of particles:
 - Transmission electron microscopy
 - X-ray diffraction
 - Size distribution measurement
 - Zeta potential measurement


OUR REFERENCES




CONTACT

- Contact the research group:

 gregory.marcos@univ-lorraine.fr


 +33 3 72 74 24 91

 thierry.czerwiec@univ-lorraine.fr

 +33 3 72 74 24 98

- Contact the TechnologyTransfer Office (TTO):

 ijl-tto@univ-lorraine.fr

 +33 3 72 74 26 04